

*Trouble reading this email? [View it in your browser](#)*

\*|LIST:ADDRESS\_VCARD|\*



*Cup Plant (Silphium perfoliatum) Q.Edwards*

September 2021

# SEEDLINGS

Wild Ones|Kalamazoo Area Chapter

What more substantial service to conservation than to practice it on one's own land?--Aldo Leopold



Cardinal Flower (*Lobelia cardinalis*) Q.Edwards

Dear \*|FNAME|\*,

I hope you've been enjoying the cooler weather of late. It's the perfect time to harvest, both fruit and seeds. If you have time, please consider participating in our annual appeal for milkweed seeds. Details below.

I hope you'll join me in welcoming Mel Luna to the Seedlings team. She brings a wealth of experience, which you can read about below. Welcome, Mel!

And finally, in light of the uncertainty and rising numbers of the Delta variant of Covid-19, our programming committee has decided to finish the 2021 program season via Zoom. I know it's been a long wait, and like you I am antsy to see friends in person, but for everyone's safety we will persevere via Zoom. Find the details for registration below, and thank you for your patience and understanding.

Happy September,

## In This Issue

From The Editor

September Program:  
The Language of  
Trees

Be A Panelist:  
Share Your Native  
Yard/Garden

Milkweed Seed  
Collection Underway

Joyful Exchange:  
Fall Plant  
Exchange Re-Cap

The Eight-Spotted  
Forester Moth

Invasive  
Insects of Concern

Welcome Mel Luna to  
the Seedlings Team

Community Events

Contact Wild Ones

---



---

## **September Program: The Language of Trees**

**Presented by Ellen Holste**, Program Coordinator, Pierce Cedar Creek Institute  
**September 22, 2021 7pm via ZOOM ([Register Here](#))**



Communication plays a key role in human life. It's easy to observe humans, and perhaps other animals, communicating with one another. But what about plants? Do plants ever “talk” to each other? And if so, what do they say and how do they say it?

*Tree community K.Patrie*

Join Ellen Holste, Community Program Manager at Pierce Cedar Creek Institute, as she discusses the hidden world within and below our forests and fields and the hidden language of trees. [Read more.](#)

*As always our programs are free of charge, but you must register ahead of time to participate in this Zoom meeting. [Click Here to Register](#)*

---

## **Visit Our YouTube Channel**

If you've missed any of our previous presentations, not to worry. Visit the KAWO YouTube channel, where you can view our programs at your convenience.

**[Click Here to visit our YouTube channel](#)**

*You can also click on the small red YouTube icon above, underneath the Table of Contents.*

---

## **Panelists Wanted: Share Your Native Landscape**

Sign-up details below

For the 2022 season, our program committee is putting together a presentation featuring a range of member gardens/yards that started from little to nothing and are at least 5 years old. Ruth Caputo (program committee chair) will visit proposed yards, and the program committee will select those that provide a range of sizes and circumstances. Owners of the selected gardens will form a panel to make the presentation. This will include brief presentations, photos of the gardens, and Q&A.

If you are interested in including your garden/yard in this presentation, please contact Ruth ([rdecann47@gmail.com](mailto:rdecann47@gmail.com) or 269-207-2815). Also, if you know of a garden/yard you think should be included, please let Ruth know.



*Wildflower Planting M. Luna*

---

## **Save the Monarch Migration One Butterfly at a Time: Plant Milkweed**

**Mike Klug**



**Help Wild Ones provide Milkweed by collecting seed for us to grow transplants and to distribute to others to seed.**

Each year we pass out many thousands of Milkweed seeds and a thousand plants to assist folks in increasing the number of Milkweed in their landscapes.

*Monarch butterfly on swamp milkweed  
(Asclepias incarnata) K.Patrie*

In the past some of you have helped by collecting seed which is much appreciated. We again ask you or anyone you know to collect Swamp and Butterfly Milkweed seed especially. We will take seed from all species however.

We would appreciate clean or nearly clean seed. If you are not familiar with the collecting technique

that provides nearly clean seed please visit [Monarch Joint Venture Collecting Milkweed Seed](#). (Scroll down to the middle of the page.) Following these directions will provide nearly clean seed.

If you can help us out, place the seed in paper bags or envelopes. In the Covid era we will set up a future drop off site.

Please let Carol and Mike Klug know if you have seed, so we can determine what will be the most convenient drop off site. You can contact Mike and Carol at: [Klug@mei.net](mailto:Klug@mei.net) or 269-623-6725

Thanks for helping to Save the Monarchs.

*Editor's note: For a quick look at how the monarch migration is progressing, [Click Here](#).*

---

## Joyful Exchange: Gratitude and Abundance

Mel Luna

Almost fifty people came out to mingle and swap knowledge and plants during our in-person fall exchange. It was a wonderful opportunity to make new friends and celebrate the plants that unite us.

A huge thank you to all the volunteers, organizers, and participants who made it such a fun, safe, and successful event!

*Full Hands and Hearts M. Luna*



## **Eight-Spotted Forester: A Day-Flying Moth**

**Ilse Gebhard**

While most moths fly at night there are a few daytime fliers. One of those is the Eight-spotted Forester (*Alypia octomaculata*) of woodland and forest edges. The caterpillar's native host plants are grape and Virginia creeper, eating not only the leaves but also the tendrils and growing stem tissue.

When disturbed, the Eight-spotted Forester larvae may drop and dangle from the plant on a silken belay line they can produce. When the danger appears over, they eat the line, thus climbing back up to their perch. This behavior is not unique to this species as I have often observed it with 1 or 2-day old monarch caterpillars.

The prepupal larvae of this moth will die unless they find pulpy wood into which they can tunnel to form their pupal cells. Setting up a brush pile of dead branches in an out-of-the-way corner of your yard will provide such a winter home for this species as well as a place for small birds to roost and escape from predators.

One summer I was lucky to find an almost grown caterpillar of this species. When it quit eating the Virginia Creeper leaves I provided and started wandering around in the jar in which it was "lodged", I looked for a dead branch to add to the jar. Like clockwork, it started to burrow into the broken end of the branch, giving me a chance to take photos of the process.



*Eight-spotted Forester caterpillar  
getting ready to tunnel into rotten wood*



*Starting to excavate*



*Keep digging, just a little further*



*Almost there*



*Now for closing up the hole*

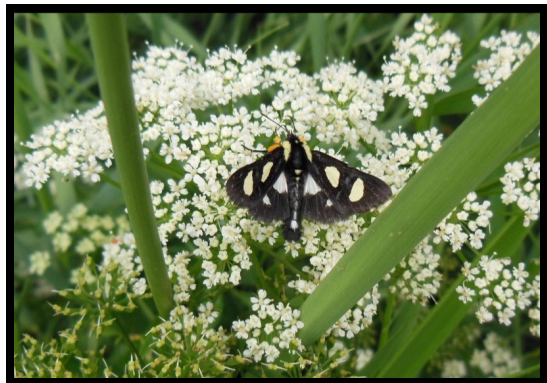


*Ta-da, all gone!*

Checking the jar on a daily basis in spring, I missed the actual emergence of the adult, but there was the moth and the hole in the end of the branch.



*After overwintering moth has emerged*



*Eight-spotted Forester adult*

## Invasive Insects of Concern

Ilse Gebhard submitted these links to information on invasive insect species of concern in our area.

*Thank you, Ilse!*

[Christmas Tree Pest Discovered in Michigan](#)

[Watch Out for the Invasive Asian Longhorned Beetle](#)

---

## New to the Seedlings Team: Mel Luna



Hi, my name is Mel and I'm working with Kim on Seedlings! I've been asked to introduce myself.

I've had a love of the plant world since I was a teenager, introduced to it through the "primitive skills" community which is heavily influenced by Native American wisdom and traditions. I've continued to expand and deepen my connection with the natural world via plants all my life, everywhere I've lived and travelled.

*Foraging elder flowers (Sambucus canadensis)*

*H. Kenig*

This includes being a longtime vegan, foraging edibles and medicinals, and working on small farms. Having traveled widely, my path has taken me into diverse ecosystems - from the Sonoran desert of Arizona to the lush temperate rainforests of the Pacific Northwest, as well as a variety of environments in South America, Asia, and across Europe. Although I grew up here in Kalamazoo, I am new to the area after spending the past twenty-five years in the west.

The journey of discovery continues to thrill me to this day. It was through my lifelong practice of bonding with each new landscape and immersing myself in its unique magic that I sought out "my people" (other plant enthusiasts) here in SW Michigan. I'm very happy and excited to be a part of this special community through the education and outreach work of KAWO.

---

## **Community Events of Interest**

**September 14 - 2:00pm-4:00pm:** Community Garden Workday at KPS Admin. bldg. Get hands-on knowledge about maintaining native plants in a garden setting, and improve your community! Please bring your own garden gloves and hand tools if you have them, some tools and supplies may be available to share. [More Info](#)

**September 16 - 7:00pm-8:00pm:** "Kalamazoo Soundwalk: Listening to Stillness in Motion" Midwest Society of Acoustic Ecology and Stewards of Kleinstuck are hosting a soundwalk at Kleinstuck preserve led by KAWO member and experimental musician, Mike Weis. Meet at the Maple Street YMCA (1001 Maple, Kalamazoo) parking lot on Hudson. [More Info](#)

**September 20 - 6:00pm-7:30pm:** River City Wild Ones presents "**Stewardship, Community Engagement, and Volunteerism**" an in-person event (masks required indoors) in the community room at Roselle Park, 1010 Grand River Dr NE, Ada, MI 49301. [Learn More](#)

**September 22 - 7:00pm:** Don't miss our monthly program, "**The Language of Trees**" presented on Zoom by Ellen Holste, Program Coordinator at Pierce Cedar Creek Institute. [More info](#) Please register in advance [here](#).

**October 2 - 9:00am-3:30pm** - Third Annual Bailey Conference, "**Connecting With Nature**" at Lake Michigan College, South Haven. Produced by the Liberty Hyde Bailey Museum and Gardens, this annual conference presents on many important ecological, horticultural, and nature study topics with experts in their respective fields. Registration includes continental breakfast and lunch. [More Info & Registration](#)

**October 5 - 6:00pm:** Webinar with honorary lifetime Wild Ones director, Doug Tallamy, where he'll be discussing his latest book, **The Nature of Oaks: The Rich Ecology of Our Most Essential Native Trees**. Go to the national [Wild Ones](#) page to learn more, or [register here](#).

**October 18 - 6:30pm-8:30pm:** "**Soil: The Hidden Secrets Beneath Your Feet**" A presentation from River City Wild Ones. [More Info](#)

**October 27 - 7:00pm:** KAWO October program, "**Reflections on the Past, Present and Future Use of Native Plants in the Landscape**" presented via Zoom by Bill Schneider, Wildtype Native Plant Nursery. *More info forthcoming*

*Editor's note: If you know of any local events pertaining to native plants that you feel may interest our readers, please send them along to us at the address below. Thanks!*

---

## **What's Happening at the National Office**

Check out our [National Office web site](#)  
To read the most recent reports from the board of directors,  
[Log In to the Member Only Area.](#)  
Thank you for your interest and support of Wild Ones!

Not a member? [Click Here](#) for information on how you can support Wild Ones.

---

SEEDLINGS is edited by Kim Patrie. It appears mostly monthly.  
The next regular issue will arrive early October. **Deadline for October issue is October 1.**  
[Send Submission](#)

Contributing Editors:

Tom Small  
Ilse Gebhard

Layout: Mel Luna

To share comments and suggestions, simply reply to this email.  
We look forward to hearing from you!

Find more information and news at [www.KalamazooWildOnes.org](http://www.KalamazooWildOnes.org)  
and [www.Facebook.com/KalamazooAreaWildOnes](https://www.Facebook.com/KalamazooAreaWildOnes)



Copyright © *|CURRENT\_YEAR|* *|LIST:COMPANY|*, All rights reserved.  
*|IFNOT:ARCHIVE\_PAGE|* *|LIST:DESCRIPTION|*

**Our mailing address is:**

*|HTML:LIST\_ADDRESS\_HTML|* *|END:IF|*

Want to change how you receive these emails?  
You can [update your preferences](#) or [unsubscribe from this list](#).

*|IF:REWARDS|* *|HTML:REWARDS|* *|END:IF|*