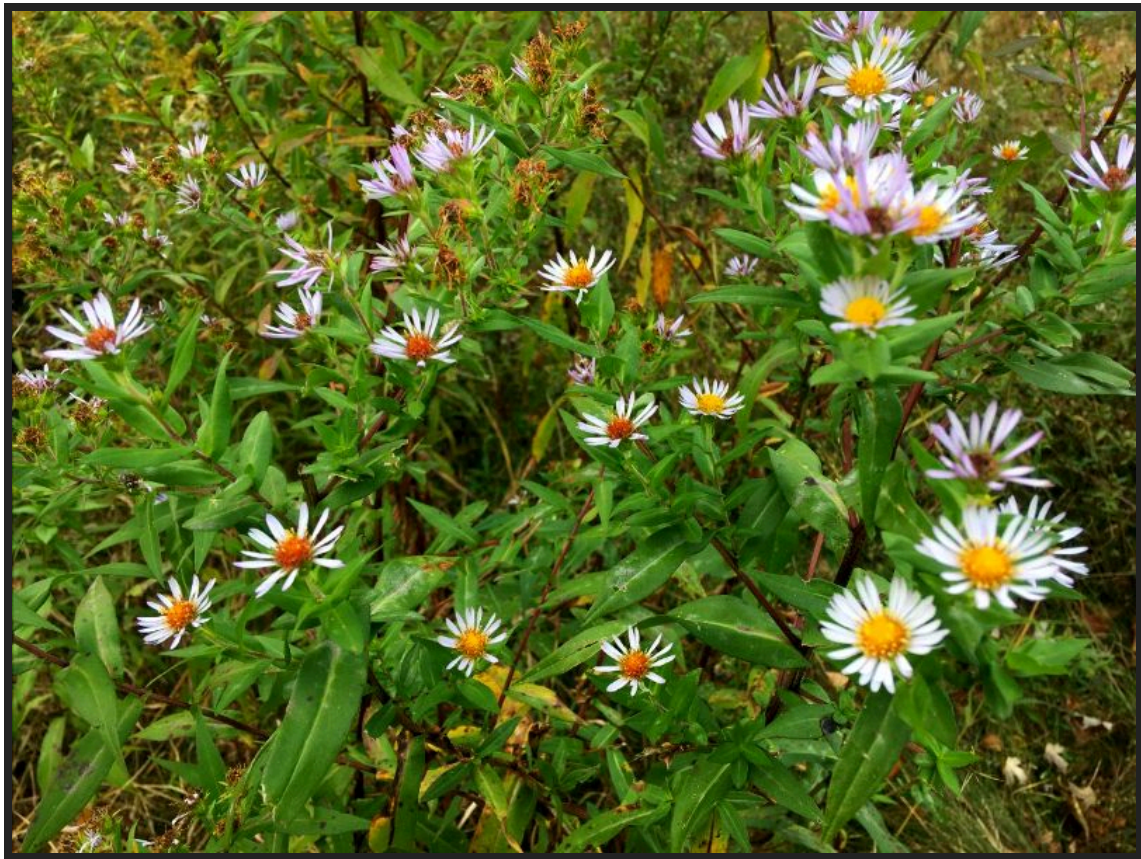


Trouble reading this email? [View it in your browser](#)

|LIST:ADDRESS_VCARD|



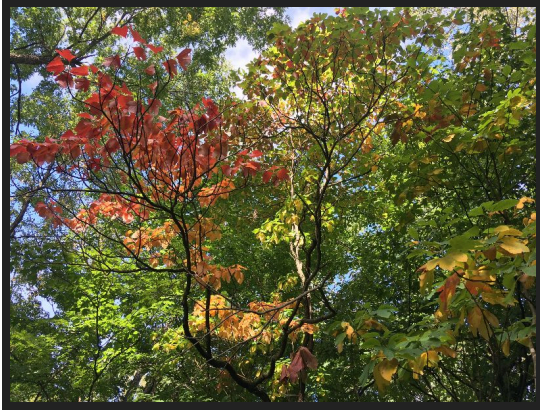
Asters near the Portage Trail K.Patrie

October 2020

SEEDLINGS

Wild Ones|Kalamazoo Area Chapter

What more substantial service to conservation than to practice it on one's own land?--Aldo Leopold



Sassafras colors in the understory K.Patrie

Dear *|FNAME|*,

Glorious autumn is in full swing! I hope you've been able to take in a color tour, even if it was in your own backyard. It's been raining leaves out my window today, and I am loving it.

Our October 28 program will be held virtually on Zoom. Dr. Doug Landis will share with us about the decline of insect populations, and what we can do about it. All the information you need about how to register and participate is in this letter.

Our chapter Executive Committee Elections are coming up in late November. We need people like you to step up and help, *|FNAME|*. If you missed it last month, please take a look [Here](#) to find out more about how you can get involved with the committees that make things happen.

Stay Safe, and Be Well,
Kim Patrie
Editor

In This Issue

From The Editor

Insects In Decline

A New YouTube Channel

Butterfly, Moth, or Sawfly?

**Plant of the Month:
Tall Coreopsis**

Community Events

Contact Wild Ones



Autumn in my yard. K.Patrie

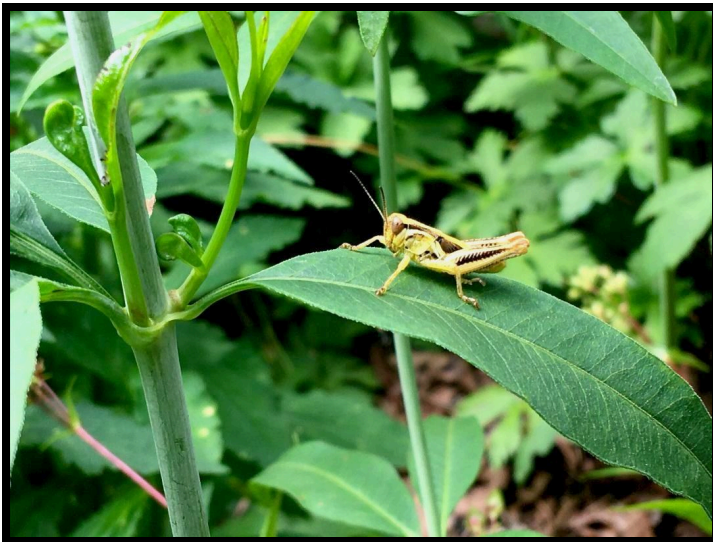


Insects In Decline:

Evidence and Conservation Implications

October 28, 7pm

Dr. Doug Landis, Dept. of Entomology, MSU

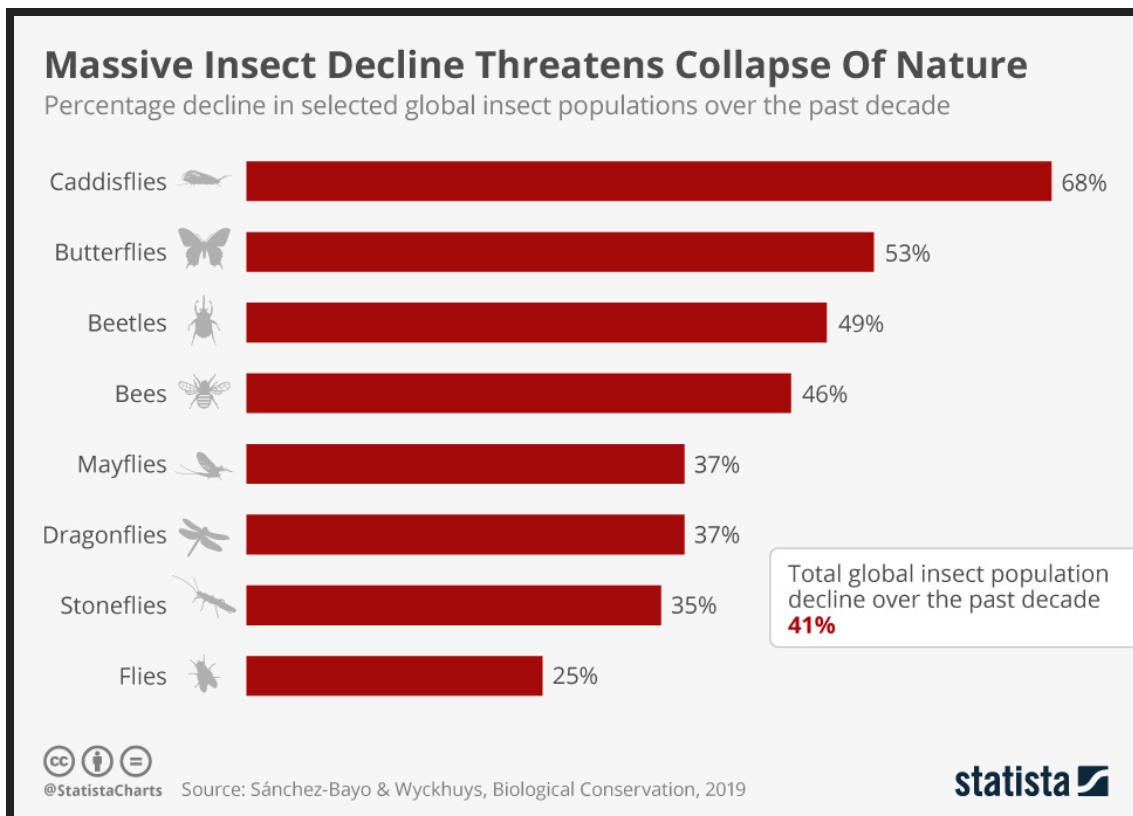


Dr. Landis will be presenting online via Zoom. Scroll down for information on how to register for this important program.

*Grasshopper on Tall Coreopsis
K.Patrie*

Insects play critical roles in healthy ecosystems. From dramatic headlines to legitimate concerns, Dr. Landis will walk us through the recent research. He'll also discuss his research on Monarch butterflies and how we can improve habitat and survival in our own backyards.

[Read More](#)



Zoom Instructions and Information

Kim Patrie & Ann Fraser

Please join us ONLINE in the [Zoom app](#) this coming **Wednesday, October 28 at 7pm**. Although this meeting is free (as always!) you must register ahead of time, so we can send you the online meeting information through Zoom.

If you have questions during the meeting, please use the Chat function (tap or click on your screen to find it) as your microphone will be remotely muted. We will collate your questions and direct them to the presenter who will address them after the formal portion of the presentation.

Registration Instructions - Click >>>[Register Here](#)

When you click on the registration link above, it will show you some meeting details such as date, time, speaker, title of talk and a description of the content of the meeting.

Finally you will be asked to submit your name, email, and zip code. Then **check your email inbox for the meeting information**, and follow the prompts a few minutes before 7pm next Wednesday.

We appreciate your patience as we navigate this new format. We are learning together with you!

[We Now Have A YouTube Channel!](#)

If you missed last month's informative presentation by Dr. Dave Warners about native shrubs and trees and their importance to biodiversity friendly native landscapes, not to worry. KAWO now has a YouTube channel, where you can view our programs at your convenience.

In the coming months we'll be adding videos of our upcoming [Monthly Programs](#), as well as curated how-to videos about native plants, natives for landscaping, and pollinators.

[Click Here to visit our YouTube channel](#)

You can also click on the small red YouTube icon above, underneath the Table of Contents.

[Butterfly Caterpillar? No! Moth Caterpillar? No! Then Who?](#)

Ilse Gebhard *Photos: Russ Schipper & Ilse Gebhard*



Not all caterpillar-like larvae are really larvae of butterflies or moths but rather of other insects, like sawflies.

Left: Cecropia moth caterpillar - Note 3 sets of true legs on thorax, 5 sets of prolegs on abdomen



Sawfly larvae have more prolegs than true caterpillars (over 5 pairs), and unlike true caterpillars, the prolegs lack crochets. Crochets are hook like structures used to grasp. Sawflies are far better known by their distinctive larvae than by the adult, which is a small wasp-like fly.

Left: Cecropia moth caterpillar - Note pads on legs called crochets

The Columbine Sawfly (*Pristiphora aquilegiae*) larvae devour the leaves of my Wild Columbines (*Aquilegia canadensis*) every spring but the plants always grow new leaves later in the summer and have survived many years of this onslaught without pesticide and only an occasional squishing of a few larvae.

I've only once come across the Hibiscus Sawfly (*Atomacera decepta*) larvae feeding on Swamp Rose Mallow (*Hibiscus moscheutos*) at the edge of our pond. Their feeding leaves behind lace-like foliage, with no permanent damage done to the plants and no pesticide used.

The Dogwood Sawfly (*Macremphytus tarsatus*) is quite common and because a number of people have asked me about it over the years, it deserves its own article.



As to the 4th species, I have found it on Tall Coreopsis (*Coreopsis tripteris*) a couple of different years.

Sawfly larva found on Tall Coreopsis - Note 3 sets of true legs on thorax, 8 sets of prolegs on abdomen with no crochets

At least two other people have submitted photos of it on Tall Coreopsis, so I think it is host specific but someone needs to raise it to the adult sawfly to

possibly pin down the ID. I submitted it to [BugGuide](#) for ID but so far no ID has been suggested.

A major staple of birds' diet is insects and they almost exclusively feed insects to their young. So welcome sawfly larvae on your plants and feed the birds.

Plant of the Month: Tall Coreopsis

Laura Shaw Photos: Courtesy of H.Bright of [Ion Exchange](#)



This herbaceous perennial in the aster family produces a profusion of daisy-like, bright yellow flowers up to 2 inches across, adorned with flat brown center disks. The blossoms, which appear midsummer to fall, occur on slender, erect stems; each bloom features 8 yellow petals with rounded tips.

Pairs of smooth, opposite leaves occur along the entire length of the plant. Individual leaves are up to 5" long and $\frac{3}{4}$ " across, with toothless margins. The upper leaf surfaces are medium green; the lower leaf surfaces are light green and minutely downy.

Tall Coreopsis (Coreopsis tripteris)

Native to the Eastern United States, Tall Coreopsis (*Coreopsis tripteris*) is widespread in eastern and central North America; it is found as far south as the Florida Panhandle, as far west as eastern Texas, and in the Canadian provinces of Québec and Ontario.

The genus name, coreopsis, is derived from Greek: *koris* translates as "bug" or "bedbug" and *opsis* means "like," suggesting that the dark, flat seed resembles a bug. Two other common names are tall tickseed (which clearly alludes to the seeds' resemblance to ticks) and Atlantic coreopsis.

Native Americans found medicinal uses for *Coreopsis tripteris*. They boiled stems to make tea for internal pains and bleeding, and used a tea made from boiled roots as an emetic. The flowers were also used to make a yellow dye.



Growing 4 to 8 feet tall, sometimes spreading 2 to 8 feet in large colonies, Tall Coreopsis occurs in prairies, dry open woods and wood margins, and along roadsides and railroad tracks. It thrives in full sun, tolerating clay or poor rocky soils, cold, heat, drought and humidity. It attracts butterflies, bees and birds, which feed on its seeds. While it provides food for caterpillars and beetles, it is not usually eaten by deer or rabbits.

This showy wildflower is colorful and attractive in native plant gardens; it freely self-seeds and is easy to grow and maintain.

Community Events of Interest

October 28th - 7:00PM: “Insects in Decline: Conservation Opportunities” Dr. Doug Landis, Distinguished Professor of Entomology, Michigan State University. *An online Zoom presentation, info near the top of this newsletter.*

Nov. 18th - 7:00PM: “You Planned and Planted: Now What?” David Mindell of Plantwise, Ann Arbor MI. *An online Zoom presentation, more info to come.*

November 1 Deadline - National [Wild Ones Photo Contest 2020](#) - The Wild Ones Annual Photo Contest is the perfect opportunity for you to show off your creativity and photographic talents while inviting us in for a look at your unique view of native plants and natural

landscaping. You don't have to be a professional photographer, you don't have to have a fancy camera, and you don't even have to be an expert on native plants. [More Info](#)

Jan. 27th - 7:00PM: "Bumble Bees, Blossoms and Boots on the Ground: Propelling Pollinator Conservation Through Citizen Science" Nikoli Nickson, Nicole Bailey, and Ann Fraser of Kalamazoo College. *An online Zoom presentation, more info to come.*

Editor's note: If you know of any local events pertaining to native plants that you feel may interest our readers, please send them along to us at the address below. Thanks!

What's Happening at the National Office

Check out our [National Office web site](#)

To read the most recent reports from the board of directors,

[Log In to the Member Only Area.](#)

Thank you for your interest and support of Wild Ones!

Not a member? [Click Here](#) for information on how you can support Wild Ones.

SEEDLINGS is edited by Kim Patrie. It appears mostly monthly. The next regular issue will arrive mid-November. **Deadline for November issue is November 1.**

[Send Submission](#)

Contributing Editors:

Tom Small

Ilse Gebhard

To share comments and suggestions, simply reply to this email.

We look forward to hearing from you!

Find more information and news at www.KalamazooWildOnes.org
and www.Facebook.com/KalamazooAreaWildOnes



Copyright © *|CURRENT_YEAR|* *|LIST:COMPANY|*, All rights reserved.
|IFNOT:ARCHIVE_PAGE| *|LIST:DESCRIPTION|*

Our mailing address is:

|HTML:LIST_ADDRESS_HTML| *|END:IF|*

Want to change how you receive these emails?

You can [update your preferences](#) or [unsubscribe from this list](#).

|IF:REWARDS| *|HTML:REWARDS|* *|END:IF|*