

*Trouble reading this email? [View it in your browser](#)*

\*|LIST:ADDRESS\_VCARD|\*



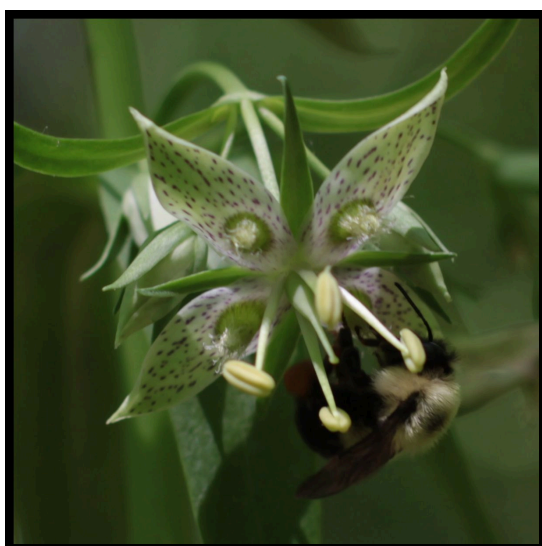
*Cream Wild Indigo (Baptisia bracteata), KAWO Community Projects site B. Bradburn*

June 2024

# SEEDLINGS

Wild Ones|Kalamazoo Area Chapter

"There can be no purpose more enspiriting than to begin the age of restoration, reweaving the wondrous diversity of life that still surrounds us." —E.O. Wilson



*American Columbo (Frasera caroliniensis) M. Luna*

Dear \*|FNAME|\*,

I asked Noel Ocen, KAWO President, to give me a summary of this year's plant sale, and she wrote the blurb below. To it I will add that Noel herself deserves much credit for the success of the sale. She realized how much people in the Kalamazoo area look forward to this event and, despite numerous challenges, got it organized and made it happen. It is, as she writes, a community effort, and no one in the community worked harder than Noel did. We are all grateful for her leadership.

There will be no indoor programs in July and August. Instead we have field trips and member garden tours planned. See [our website](#) for the full schedule. Our monthly programs will resume in September with a presentation on

## In This Issue

From the Editor

Plant Sale Success

Member Garden  
Tours Begin This  
Month

Field Trip to  
Portman Nature  
Preserve

Spring Plant  
Exchange

We'll Always Have  
Paris

The Silvery  
Checkerspot  
Butterfly Puzzle

Native Flora ID Quiz

Community Events

trees by Larry Cornelis. In the meantime, you can view past presentations by visiting our YouTube channel, linked below. We look forward to seeing you at one of our outdoor events this summer.

**Beth Bradburn**  
*Editor*

## Contact Wild Ones

---



---

**If you've missed any of our previous presentations, not to worry.**

Visit the KAWO YouTube channel, where you can view our programs at your convenience.

[\*Click Here to visit our YouTube channel\*](#)

You can also click on the small red YouTube icon above, underneath the Table of Contents.

Past issues of Seedlings can be found [\*here\*](#), and by clicking the link between the Facebook and YouTube links above.

---

## **Thank You for Participating in Our Native Plant Sale**

**Noel Ocen**

You helped us raise over \$4,500 this year and, more importantly, committed to putting almost two thousand native Michigan plants into the ground! The Plant Sale is a huge undertaking and we had over 25 volunteers. Ann Fraser made the entire on-line ordering process possible. Dave Wendling and Ann Klobucar took responsibility for verifying all the orders.



Mike and Carol Klug provided three milkweed plants as gifts for each customer. Kathy McGoff supplied all the boxes and canopies, and organized tables. Over twenty others worked tirelessly to tag, sort, and distribute almost 2000 beautiful plants supplied by Hidden Savanna Nursery to 147 customers who generously supported the 2024 Wild Ones Plant Sale. The Plant Sale is truly a Wild Ones community effort.



*2024 Plant Sale M. Luna*

## Member Garden Tours Start June 4



*Pentemon hirsutus M. Luna*

Each month this summer, KAWO members with native plant gardens will offer tours organized by neighborhood. We begin June 4 in the Westwood East neighborhood in Kalamazoo County. This is an open-house style tour; stop by in any order you wish. For a map and garden descriptions, click [here](#).

**Tuesday, June 4  
6:00am - 8:00pm**

## Field Trip to Portman Nature Preserve

Mitch Lettow, Stewardship Director at Southwest Michigan Land Conservancy, will follow up [his April presentation](#) by leading a field trip to [Portman Nature Preserve](#). Come along to learn more about native plants and SWMLC's work at this beautiful natural area.

**Saturday, June 8  
9:00am - 11:30 am**



*Tradescantia ohiensis B. Bradburn*

---

## Spring Plant Exchange Is Tomorrow



KAWO's annual spring plant exchange will take place this Sunday. You don't need to bring a plant to take one home. We'll be there to answer your questions about native plants. To find out more about what to expect please visit [the plant exchange web page](#).

Sunday, June 2  
1:00pm - 4:00pm

*2022 Spring Plant Exchange M. Luna*

---

## Community Projects Spotlight: Paris Cleaners Site

**Beth Bradburn**

I've been driving past the unusual purple-striped Paris Cleaners building on Crosstown Parkway for years, but it wasn't until Paul Laferriere and I decided to learn more about native plants by showing up for a KAWO Community Projects work day three years ago that I found out about the flourishing landscape behind the building, along Axtell Creek. Margo Rebar was there that day and introduced us to the plants. I especially remember her showing us the rows of spikes hanging along the aptly named sideoats grama (*Bouteloua curtipendula*).

I asked Tom Small about the history of this site. Nancy and Tom planned it in 2005, with funding from the federal, state, and city governments as well as from KAWO. Nancy Small supervised the installation, pictured at right in a photo taken by Tom. The original plant list included almost sixty species (but not sideoats, which must have come later). Tom told me that ducks and muskrat quickly devoured what was planted in the water.



Paul Olexia and Andrew DeGraves planted shrubs and trees, including the ninebark (*Physocarpus opulifolius*) in bloom on the left in this photo, which I took in late May 2024. (It's the same spot, but the purple stripe is gone.) The foliage of cup plant (*Silphium perfoliatum*) is visible on the right, and that of queen of the prairie (*Filipendula rubra*) at lower left. Hidden from this angle is blooming Ohio spiderwort (*Tradescantia ohiensis*).



We won't have to do much with the site in the summer of 2024. The investment of time, work, and money over the years has turned out a mature planting now providing ecosystem services to many forms of life in the area. If you're dropping off dry cleaning later in the summer, stop by to see some blooms like the swamp rose mallow (*Hibiscus moscheutos*) and ironweed (*Vernonia missurica*) in this photo from Tom.



## The Silvery Checkerspot Butterfly Puzzle

Ilse Gebhard



*Silvery Checkerspot caterpillar I. Gebhard*

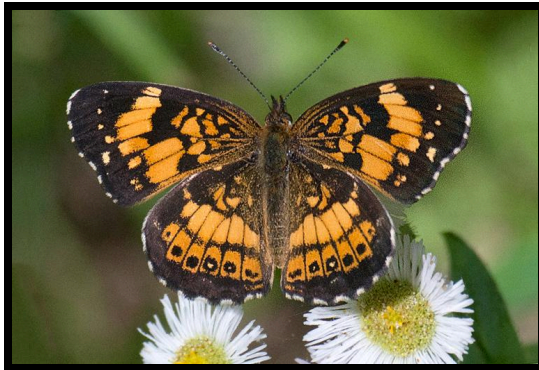
One mid-July, a few years ago, a friend gave me 20 small caterpillars she had found feeding together on Purple Coneflower. Searching through my *Caterpillars of North America* book by David L. Wagner I found a match, not only in appearance but also in "life style."

Female Silvery Checkerspots (*Chlosyne nycteis*) lay their eggs in a group and the young larvae stay close together as they feed. The book mentions a number of composites as host plant, including asters, and the caterpillars readily fed on New England Aster leaves from a plant growing right next to our deck.



*Silvery Checkerspot chrysalis I. Gebhard*

I learned that at our latitude the Silvery Checkerspot can have either one or two generations. In mid-summer some of the caterpillars go through metamorphosis to the butterfly stage the same year, like the one specimen did. Others, like the 19 that had quit feeding, find shelter at the soil surface under the host plant, where they become lethargic and hibernate until the following spring. In spring they arouse, and for a few weeks, feed upon the tender leaves of the new growth and then complete their metamorphosis to adult by late spring or early summer. What a marvelous adaptation for the survival of the species. If the caterpillars of the first generation don't survive to become adults the next spring, there are those of the second generation that might, and vice versa.



*Silvery Checkerspot S. Bright*

After a few days all but one caterpillar stopped feeding. The one that kept feeding continued to grow, pupated on August 9th and the butterfly emerged on August 18th. The other 19 caterpillars, while not feeding or growing, were very much alive. This was very puzzling, but I found the answer in a used book we had found at the Friends of the Library. While modern butterfly field guides, like *Butterflies Through Binoculars* by Jeffrey Glassberg, are very good for identifying butterflies, they lack some of the life cycle details I found in *Butterflies* by Clarence M. Weed, published in 1917.

By the time the one butterfly emerged in August and had flown off, I was pretty sure that the 19 non-feeding caterpillars were going to hibernate at that larval stage. I placed them under the New England Aster, snipped off a few leaves to cover them lightly, and hoped this would give them some visual protection from predators.

My most-often consulted butterfly book, *Michigan Butterflies and Skippers* by Mogens C. Nielsen, states that the flight period for Silvery Checkerspots in Michigan is May 26 to September 5. I did a search of iNaturalist and found 44 sightings for Michigan, all in June, July, and August, and all since 2010. The information in Nielsen's book is based on almost a hundred years of sightings, going back to 1892 when the first list of Michigan butterflies and skippers was published. iNaturalist, on the other hand, was only launched in 2008. Maybe in time, May and September sightings will be reported to iNaturalist as well.

Read Ilse Gebhard's blog post on the solar eclipse and honeybee foraging [here](#).

---

## **Who Am I?**

**A native flora ID quiz from Ilse Gebhard**





*Photos R. Schipper*

Click [here](#) for the answer!

---

## Community Events of Interest

**Sunday, June 2 - 1:00pm-4:00pm:** Spring Plant Exchange, Tom and Ruth's house. [Learn more.](#)

**Tuesday, June 4 - 6:00pm-8:00pm:** KAWO member garden tours, Westwood East neighborhood. [Learn More.](#)

**Thursday, June 6 - 7:00pm:** Pints and Native Plants, an informal meet-up at [Brewery Outré](#) in Kalamazoo. [Learn more.](#)

**Saturday, June 8 - 9:00am-11:30am:** KAWO field trip to Portman Nature Preserve, with Mitch Lettow, Stewardship Director, SWMLC. [Portman Nature Preserve](#), Van Buren County.

**Saturday, June 8 - 10:00am-12:00pm:** Michigan Botanical Society field trip to dry southern forest and dry-mesic southern forest, Barry State Game Area. [Learn more.](#)

**Sunday, June 9 - 10:00am-12:00pm:** Volunteer Day, Kleinstuck Preserve. Meet at the Maple Street YMCA tennis courts.

**Tuesday, June 11 - 1:00pm-2:00pm:** Wild about Conservation: What Is Climate? This is the first in an online conservation seminar series from MSU Extension; many events in the series relate to the

Wild Ones mission. To view the series schedule and register, click [here](#).

**Friday, June 14 - 10:00am-12:00pm:** KAWO Community Projects work day, Northglade School. [Learn more](#).

**Monday, June 17 - 6:30pm-8:30pm:** The Highlands: An Update, Wild Ones River City event, Grand Rapids. [Learn more](#).

**Friday, June 21, and Saturday, June 22 - 8:30am-5:00pm:** Sedge Identification Class with Tyler Basset and Bradford Slaughter, Kellogg Bird Sanctuary. Register by June 17. [Learn more](#).

**Monday, June 24 - 5:00pm-7:00pm:** Native Plant Garden Tour, Wild Ones River City event, Grand Rapids. [Learn more](#).

**Wednesday, June 26 - 10:00am-12:00pm:** KAWO Community Projects work day, Kalamazoo Public Schools Administration Building. [Learn more](#).

**Saturday, June 29 - 10:00am-12:00pm:** Michigan Botanical Society field trip to dry-mesic northern forest, Turner Creek Forest, Barry State Game Area. [Learn more](#).

**Saturday, June 29 - 10:00am-12:00pm:** Finding Fiddleheads: Fern Identification Hike, Pierce Cedar Creek Institute. [Learn more](#).

*Editor's note: If you know of any local events pertaining to native plants that you feel may interest our readers, please send them along to us at the address below. Thanks!*

---

## **What's Happening at the National Office**

Check out our [National Office web site](#)

To read the most recent reports from the board of directors,

[Log In to the Member Only Area](#).

**Thank you for your interest and support of Wild Ones!**

*Not a member? [Click Here](#) for information on how you can support Wild Ones.*

---

SEEDLINGS is edited by Beth Bradburn. It appears mostly monthly.

The next regular issue will arrive in July. **Deadline for the July issue is June 20.**

[Send Submission](#)

Contributing Editor:

Ilse Gebhard

**To share comments and suggestions, simply reply to this email.**

**We look forward to hearing from you!**

Find more information and news at [www.KalamazooWildOnes.org](http://www.KalamazooWildOnes.org)

and [www.Facebook.com/KalamazooAreaWildOnes](https://www.Facebook.com/KalamazooAreaWildOnes)



*Copyright © \*|CURRENT\_YEAR|\* \*|LIST:COMPANY|\*, All rights reserved.  
\*|IFNOT:ARCHIVE\_PAGE|\* \*|LIST:DESCRIPTION|\**

**Our mailing address is:**

\*|HTML:LIST\_ADDRESS\_HTML|\* \*|END:IF|\*

Want to change how you receive these emails?

You can [update your preferences](#) or [unsubscribe from this list](#).

\*|IF:REWARDS|\* \*|HTML:REWARDS|\* \*|END:IF|\*