

Trouble reading this email? [View it in your browser](#)

|LIST:ADDRESS_VCARD|



Wild Columbine (Aquilegia canadensis) M. Luna

June 2022

SEEDLINGS

Wild Ones|Kalamazoo Area Chapter

What more substantial service to conservation than to practice it on one's own land?--Aldo Leopold



Virginia Creeper (Parthenocissus quinquefolia) Q. Edwards

Dear *|FNAME|*,

Keeping things short and sweet this month - because who isn't out in their garden until sundown? It bears repeating - [Virginia Creeper](#) is a native that makes a fine addition to every landscape. Let's spread the word about this beautiful and friendly (climbs, but never strangles) vine that contributes so much.

June brings us two of my favorite KAWO events - our native plant sale and our native plant exchange! Don't miss the chance to mingle with other plant enthusiasts and bring home something new.

The natural world is abundant with life in June. Ilse's piece welcomes back a bug beloved the world over that we are incredibly lucky to host here in Michigan, the luminous firefly! I discovered one of the lovely larva in my rain garden yesterday, which you will see in the article below.

While looking over the [new member handbook](#) recently, I could trace my own evolution learning about landscaping with natives with the "wild ones accelerated learning program" outlined therein. For me, volunteering has indeed been the key to quickly integrating so many new concepts and plants. I cannot overstate the value of getting involved. Please

In This Issue

From The Editor

**Request for
Volunteers**

**Twinkle, Twinkle,
Little Firefly**

**Annual Spring Plant
Exchange**

**Announcement:
Program Committee
Chair Opening**

Community Events

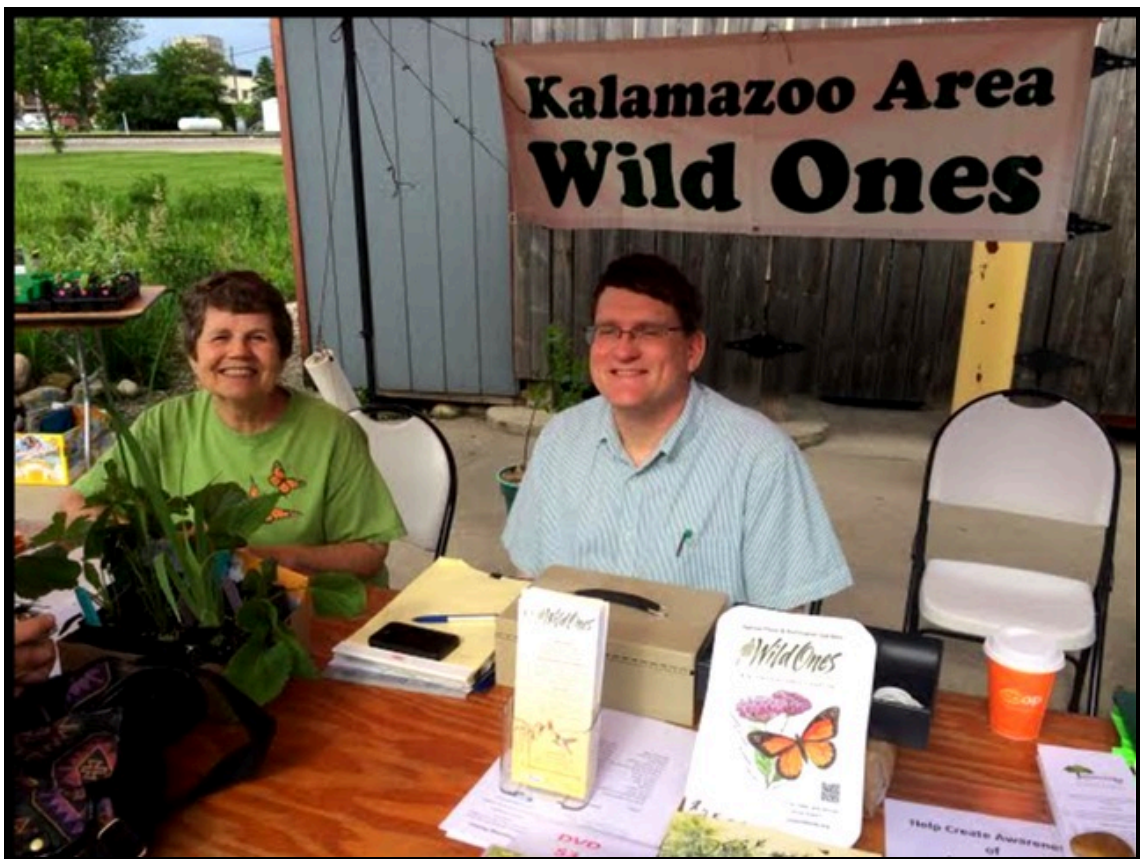
Contact Wild Ones



reach out if you have a desire to accelerate your own learning journey. More on that below!

See you out among the living,
Mel Luna
Editor

Wild Lupine (Lupinus perennis L.) M. Luna



VOLUNTEERS NEEDED FOR UPCOMING TABLING EVENTS

Hurrah!! COVID restrictions are being lifted and organizers are eagerly setting up various events delayed during the pandemic. Over the next few months, KAWO will be asked to ‘table’ at a number of events and *WE NEED VOLUNTEERS*. Tabling is a vital part of KAWO’s Outreach and Education function.

We have 2 events coming up quickly and we need volunteers for each:

- June 5th, 1:00 -5:00 pm, 29th Annual Plant Exchange
- June 18th, 10:00 am – 3:00 pm, 8th Annual KAWO Community Native Plant Sale: [Sign up!](#)

Many of you have done this before, but for those who haven’t, let us explain.

As a representative of KAWO, you will display and distribute a variety of printed materials and discuss KAWO’s programs with visitors attending the event. All materials will be provided to you.

How much time is involved? 2-4 hours, depending on the event. How often? Only as often as you would like to volunteer. It is preferable to have 2 volunteers filling each shift, especially if heavy traffic is expected at the event. If you haven’t done this before, we will pair you up with an ‘experienced’ volunteer.

Tabling can really be fun! You will meet many new people who either share your interest in native plants or who are really eager to learn more.

If you can volunteer for any of the above events, please contact Noel Ocen at nog@charter.net

Twinkle, Twinkle, Little Firefly

Ilse Gebhard

It was late June and colleagues and I were driving home. The Chemistry Symposium we had attended in Nashville, TN got over at noon, which put us into Indiana just as it was getting dark. Just as well, since we had left the more interesting scenery of Tennessee and Kentucky behind.

But nature has its surprises - for miles and miles the fields along the interstate were aglow with fireflies, also called glowworms or lightning bugs. Fireflies are soft-bodied beetles with over 2000 described species worldwide. While all firefly species glow at the larval stage, only some adults produce light.

Common Eastern Firefly (Photinus pyralis). R. Schipper



The location of the organ that produces the light varies between species and even between sexes of the same species.

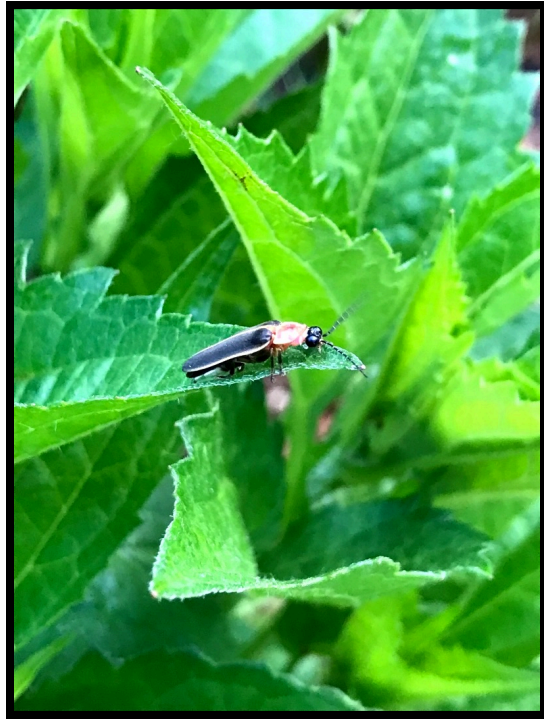
Fireflies undergo complete metamorphosis, with the female laying her eggs on or just below the surface of the ground. Once hatched, the larvae feed on snails, worms and slugs. Fireflies overwinter at the larval stage by burrowing into the ground or under the bark of trees. They emerge in spring, pupate and emerge as adult beetles in early summer. The diet of adults varies with species, some being predatory, while others feed on pollen or nectar.

Common Eastern Firefly Larva M. Luna



The light production by fireflies is due to a chemical reaction called bioluminescence. At the larval stage it is a warning signal to would be predators that the larva might be distasteful, as they contain compounds similar to those found in some poisonous toads. At the adult stage, on the other hand, it is used to attract, primarily a mate. Each species has its own pattern of light-flashing, including the duration, timing, color, number and rate of repetitions, height of flight, and upward or downward direction of flight.

Living in a rural setting I used to enjoy watching fireflies from bed at night. As with other insects, their numbers are declining and I wondered if I would see any when we moved into a suburban setting. From one of our living room windows I can see part of a small meadow with native plants and I was most happy to spot a few flashes. Days later I found a Common Eastern Firefly (*Photinus pyralis*) on the wall of our front porch. Since it is the most common firefly species in the United States, I have to assume that is what I saw flying over the meadow.



"Big Dipper" (*Photinus pyralis*) on Black Eyed Susan (*Rudbeckia hirta*). M. Luna

The flashing-light, mate-attracting strategy can go awry. Female fireflies in the genus *Photuris* mimic the flashing pattern of fireflies in the *Photinus* genus, thereby attracting males to what appears to be a suitable mate. But instead of mating, the female eats the male and incorporates the male's toxins in her body, thusly giving her extra protection from predators, which she would not get from eating other prey.

Announcement: **Program Committee Chair Opening** **Ruth Caputo**

Kalamazoo Area Wild Ones needs a new chair for the Program Committee (PC) starting this November. Ruth Caputo is leaving after 11 years in the position. She will continue to serve as liaison between the Publications Committee and the PC and as contact related to facilities.

Which leaves the new chair with the following responsibilities:

- Schedule meetings of the PC and serve as chair for the meetings. Provide a summary of the meeting to the members.
- Work with other committee members as needed to provide a complete program for the following year.
- Communicate with the Executive Committee

Working with the PC is a great way to learn about KAWO and the many topics that relate to native plants. And you get to work with knowledgeable, friendly people. The group begins planning for the following year in April and meets roughly every 3 weeks until the program is complete.

If you are interested in helping KAWO in this way or have questions, please let one of the PC members know. At present, they are Tom Small, Paul Olexia, Mike Klug, Ann Fraser, and Ruth Caputo.

We will also need new members for the Program Committee in the next year or two. Please consider doing this and let us know if you're interested.

Community Events of Interest

June 4 - 11:00am-1:00pm: Women in Nature Event: Habitat Restoration. In-person workshop at the Sarett Nature Center. [Details](#)

June 5 - 1:00pm-5:00pm: KAWO's 29th Annual Spring Plant Exchange. Please drop off plants before the exchange. [More info](#)

June 11 - 10:00am-5:00pm: Native Plant Sale at Sarett Nature Center. [Details](#)

June 18 - 10:00am-3:00pm: KAWO Community Native Plant Sale at People's Food Co-op. [More details](#)

June 20 - 5:00pm-8:30pm: "15th Anniversary Celebration and Expo" with Wild Ones River City Chapter (Grand Rapids). [More details](#)

June 30 - 11:00am - 12:00pm: "The Rise of Oak Wilt" program hosted by Pierce Cedar Creek Institute in-person and virtually. [Register here](#)

July 9 - 9:00am-12:00pm: Field trip to oak savannah hosted by Kalamazoo Area Wild Ones. Location TBD. [Read more.](#)

July 20 - 11:00am-3:00pm: Annual Native Plant Sale and Fundraiser with River City Wild Ones at the Fulton Street Farmer's Market. [Details](#)

July 23 - 10:00am-12:00pm: Field trip to Lillian Anderson Arboretum with Ann Fraser. Hosted by KAWO. [More details](#)

July 30 - 6:00pm-9:00pm: Pierce Cedar Creek Institute's annual fundraiser event. See [website](#) for details.

Editor's note: If you know of any local events pertaining to native plants that you feel may interest our readers, please send them along to us at the address below. Thanks!

What's Happening at the National Office

Check out our [National Office web site](#)

To read the most recent reports from the board of directors,

[Log In to the Member Only Area.](#)

Thank you for your interest and support of Wild Ones!

Not a member? [Click Here](#) for information on how you can support Wild Ones.

SEEDLINGS is edited by Mel Luna. It appears mostly monthly.

The next regular issue will arrive in July. **Deadline for July issue is June 20.**

[Send Submission](#)

Contributing Editors:

Tom Small

Ilse Gebhard

To share comments and suggestions, simply reply to this email.

We look forward to hearing from you!

Find more information and news at www.KalamazooWildOnes.org

and www.Facebook.com/KalamazooAreaWildOnes



Copyright © **|CURRENT_YEAR|* *|LIST:COMPANY|**, All rights reserved.
|IFNOT:ARCHIVE_PAGE|* *|LIST:DESCRIPTION|

Our mailing address is:

|HTML:LIST_ADDRESS_HTML|* *|END:IF|

Want to change how you receive these emails?

You can [update your preferences](#) or [unsubscribe from this list](#).

|IF:REWARDS|* *|HTML:REWARDS|* *|END:IF|